



# POINTS ALICANTE

## 5727

Embedded studs without protrusion

Offering optimum lighting flexibility, ALICANTE embodies elegance and performance. Compact and discreet, it adds a touch of luminous sophistication. With its IP68 rating and IK10 robustness, it guarantees exceptional durability, even in the most demanding environments. Optionally available with four-color printing, it offers dynamic color animations

to enhance and enhance a variety of spaces. What's more, its intelligent design features two independently tilting trays for optimum adjustment and precise, customized lighting. Whether to illuminate a facade or a garden, the ALICANTE spotlight adapts to your needs.





*Camille Lafon*

Credits from left to right:  
1/3. © Camille Lafon - Nîmes, France  
2/4. © Camille Lafon - Montpellier, France



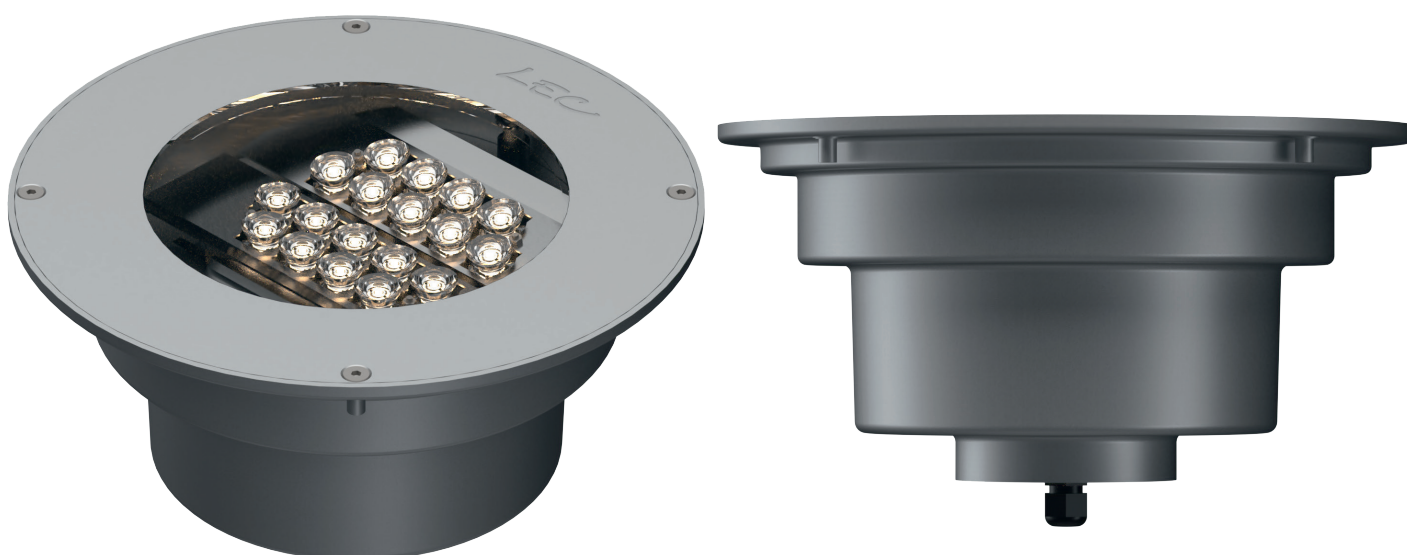
*Camille Lafon*



## FEATURES

### LUMINAIRE'S BODY

<b>Materials</b>	Clear anodized machined aluminium
<b>IP rating</b>	IP68
<b>IK rating</b>	IK10 60 J
<b>Weight</b>	4.6 kg
<b>Cable length</b>	100 cm
<b>Features</b>	2-axis adjustable Adjustable orientation without disassembly Adjustable parallel trays: -3° à 25° Transparent flat window
<b>Integrated power supply</b>	230 V - non dimmable, 230 V + 0-10 V, 230 V + DMX, 230 V + DALI (class II)

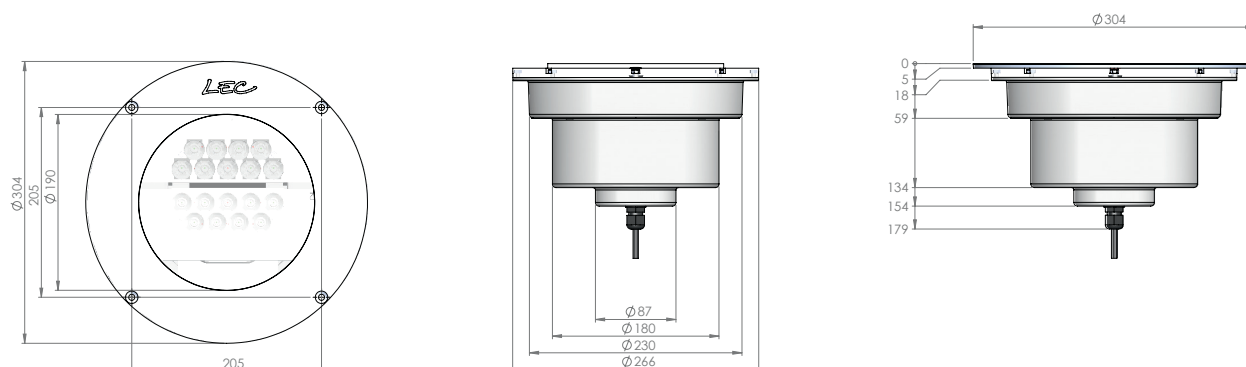


### OPTICAL UNIT

<b>Color temperature</b>	2 200 K (A), 2 700 K (F), 3 000 K (E), 4 000 K (N), 6 000 K (W), Red (R), Amber (O), Green (V), Blue (L), Royal Blue (K), Four-color (TW in RGBW)
<b>Type of LED</b>	Power LED
<b>Optics</b>	10°, 20°, 36°, 52°, 77°, 120°, 130 x 25° (L1), 116 x 44° (L2), 40 x 10° (L4), 130 x 25° D50° (L5), 116 x 44° D36° (L6), 100 x 20° (L7). See details in the "Photometric Specifications" document
<b>Number of LED</b>	18
<b>Reference flux*</b>	3 762 lm
<b>Product reference</b>	<b>5727</b>

*\*This value, obtained at the luminaire output, corresponds to the optimum number and type of LEDs for warm white light (3,000 K).*

## DIMENSIONS



## OPTIONS

Four-color  
Mixed optics possible  
Honeycomb louvre



## ACCESSORIES

Choice of recessed mountings for installation:

- With extension
- Compact



## CONFIGURATION GUIDE

Configuration example: 5727TY-R-L2E  
(to be customized with the references below)

5727	T	Y	R	L2E
Reference	Power supply	Connector	Color	Optics
5727	ALICANTE	Ø 24 V controllable via PWM T 230 V TD 230 V controllable via DALI TV 230 V controllable via 0/10 V TX 230 V controllable via DMX	Ø Cable outlet Y Cable connector	<b>Other Optics</b> 2 x 9 LED in mono or 2 x 8 LED in quadri <b>L3</b> 2 x 6 LED - mono only <b>L2</b> Optics <b>E</b> Ellipse orientation (E, S, W, N)
				R LED color
				T Four-color