

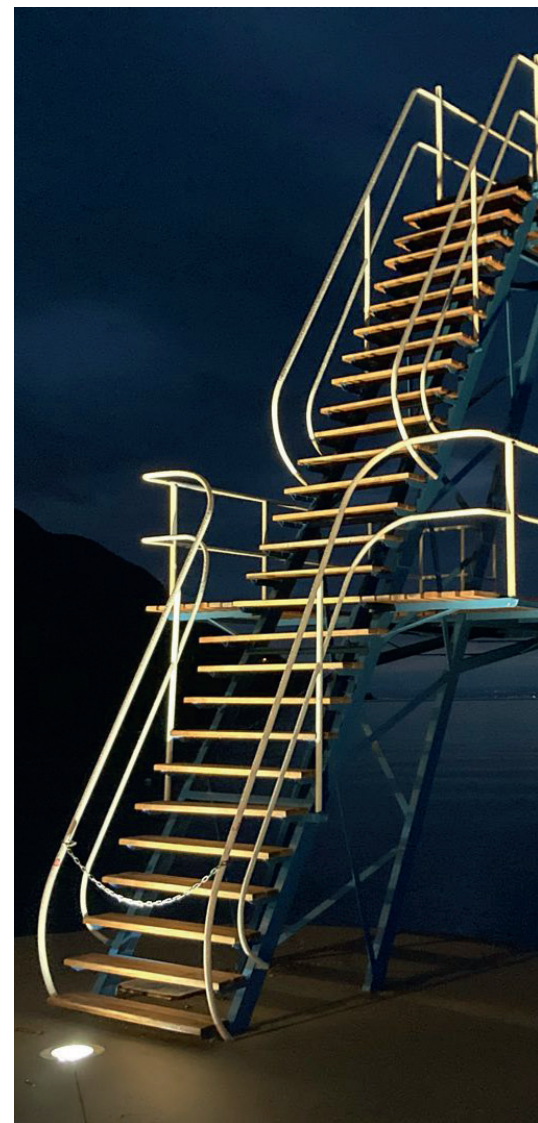
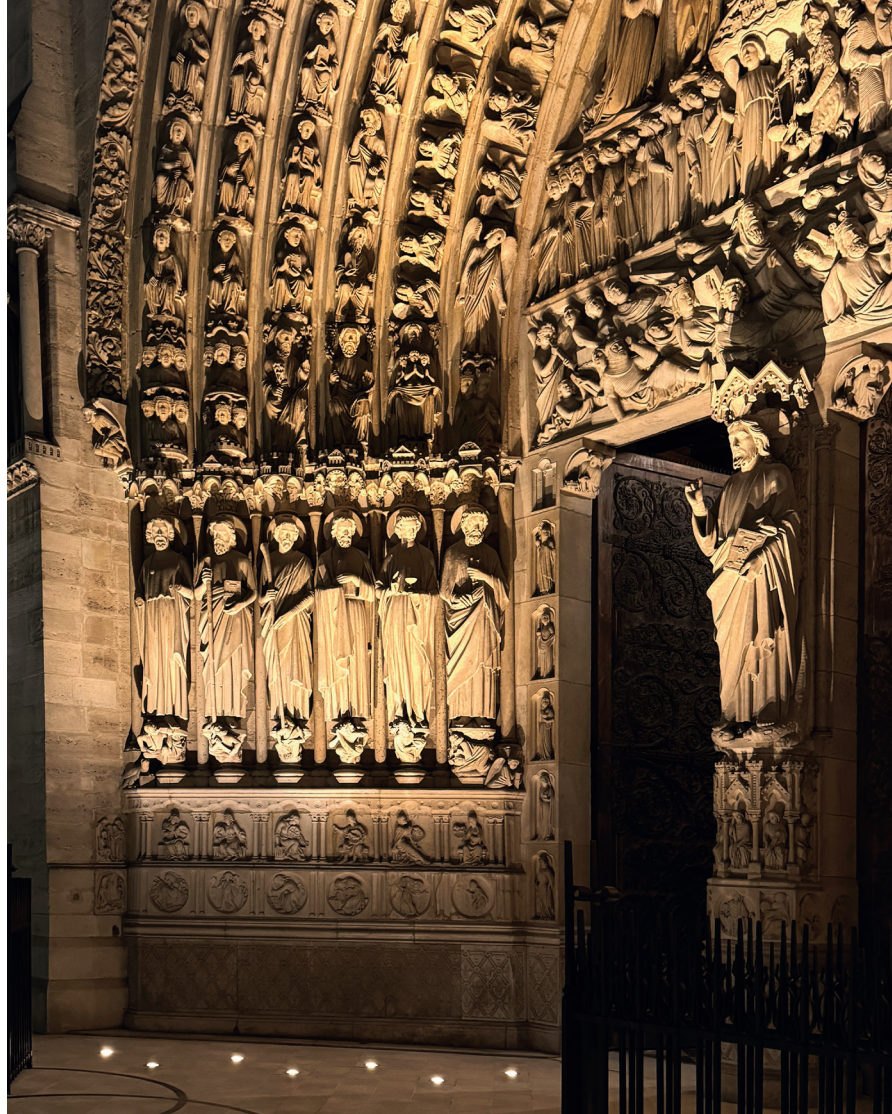


5716

Embedded studs without protrusion

ALLEVARD is the mid-range version of our range of adjustable round recessed luminaires, offering optimum lighting flexibility. Thanks to its 360° rotation in the recessed housing, it can be used to direct the luminous flux with precision, without any installation constraints. Its LED plate can be tilted from 0° to 25°, and is easy to adjust from the outside, with no need

for dismantling and no impact on waterproofing. Ideal for lighting facades, highlighting architectural details, and street furniture, ALLEVARD blends perfectly into public spaces. Robust and discreet, it is designed to withstand demanding environments. Available in four-color versions, it can also be used to create dynamic, customized lighting atmospheres.

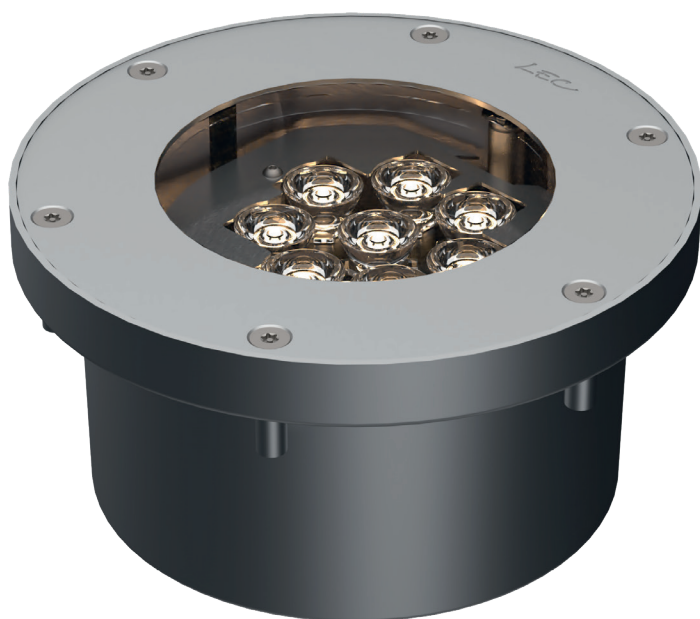


Credits from left to right:
 1. © LEC - Santarem, Portugal | 2. © 11h45 - Paris, France
 3. © Les éclaireurs - Paris, France | 4. © MFROMER - Martigny, Switzerland
 5. © LEC - Saint-Gingolph, France

FEATURES

LUMINAIRE'S BODY

Materials	Clear anodized machined aluminium
IP rating	IP68
IK rating	IK10
Weight	2.3 kg
Cable length	100 cm
Features	2-axis adjustable Adjustable orientation without disassembly Adjustable tray : 0° à 25° Transparent flat window
Integrated power supply	24 V dc + PWM (class III)
Remote power supply via cable	230 V ac - non dimmable, 230 V ac + 0–10 V, 230 V ac + DALI (class II)
Remote power supply in distant box	230 V ac -> 24 V dc + PWM Control possible via: 0–10 V, DMX, DALI, potentiometers

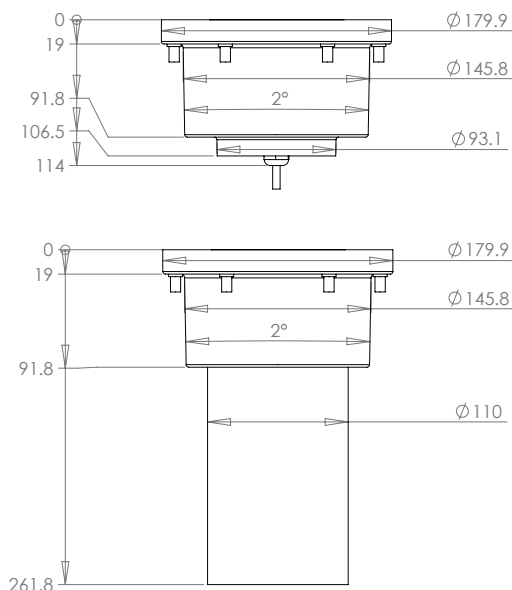


OPTICAL UNIT

Color temperature	2 200 K (A), 2 700 K (F), 3 000 K (E), 4 000 K (N), 6 000 K (W), Red (R), Amber (O), Green (V), Blue (L), Royal Blue (K), Four-color (TW in RGBW)
Type of LED	Power LED
Optics	10°, 20°, 36°, 52°, 77°, 120°, 130 x 25° (L1), 116 x 44° (L2), 40 x 10° (L4), 130 x 25° D50° (L5), 116 x 44° D36° (L6), 100 x 20° (L7). See details in the "Photometric Specifications" document
Number of LED	7
Reference flux*	1 463 lm
Product reference	5716

*This value, obtained at the luminaire output, corresponds to the optimum number and type of LEDs for warm white light (3,000 K).

Technical drawing of a circular flange. The drawing shows a circular part with a central hole and six mounting holes. The outer diameter is labeled as $\phi 179.9$ and the inner diameter is labeled as $\phi 104$. The text "LSC" is visible on the top surface of the flange.



Four-colour
Mixed optics possible
Honeycomb louvre



Choice of recessed mountings for installation:

- With extension
- Compact



Configuration example: 5716TY-R-L2E
(to be customized with the references below)

5716	T	Y	R	L2E
Reference	Power supply	Connector	Color	Optics
				L2 Optics E Ellipse orientation (E, S, W, N)
			R LED color T Four-color	
		Ø Cable outlet Y Cable connector		
	Ø 24 V controllable via PWM UD 24 V controllable via DALI UX 24 V controllable via DMX T 230 V TD 230 V controllable via DALI TV 230 V controllable via 0/10 V TX 230 V controllable via DMX			
5716 ALLEVAR				