

POINTS BUTTON B

5643

Handrails

Ideal for lighting pedestrian and cycle paths, BUTTON B is a discreet light point. With no protruding parts, it is designed to integrate perfectly into a Ø 48 mm handrail. Its MB4 optic, inclined at 45° to the horizontal and positioned every

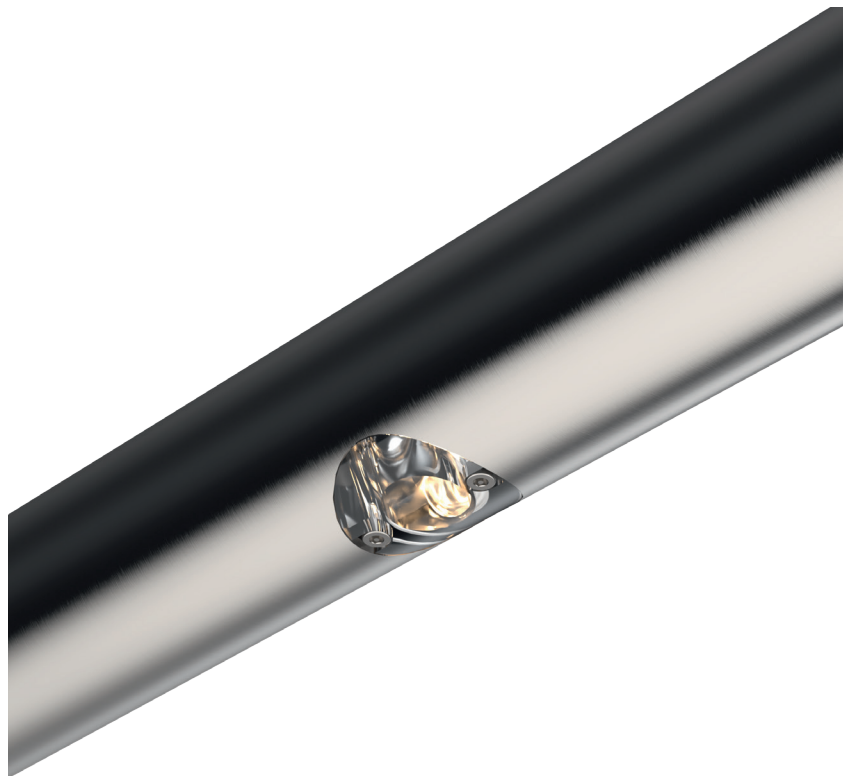
4 meters, ensures optimum visibility in compliance with PMR standards. Sturdy and durable, it is made of colorless anodized aluminum with an anti-UV and scratch-resistant polycarbonate window.

BUTTON B

FEATURES

LUMINAIRE'S BODY

| | |
|---|---|
| Materials | Clear anodized machined aluminium |
| IP rating | IP67 |
| IK rating | IK10 20 J |
| Weight | 0.07 kg |
| Cable length | 20 cm |
| Features | Mounting in a 48 mm diameter tube fitted with a single 35 mm diameter hole Transparent flat window |
| Integrated power supply | 24 V dc + PWM (class III) |
| Remote power supply in distant box | 230 V ac -> 24 V dc + PWM Control possible via: 0-10 V, DMX, DALI, potentiometers |

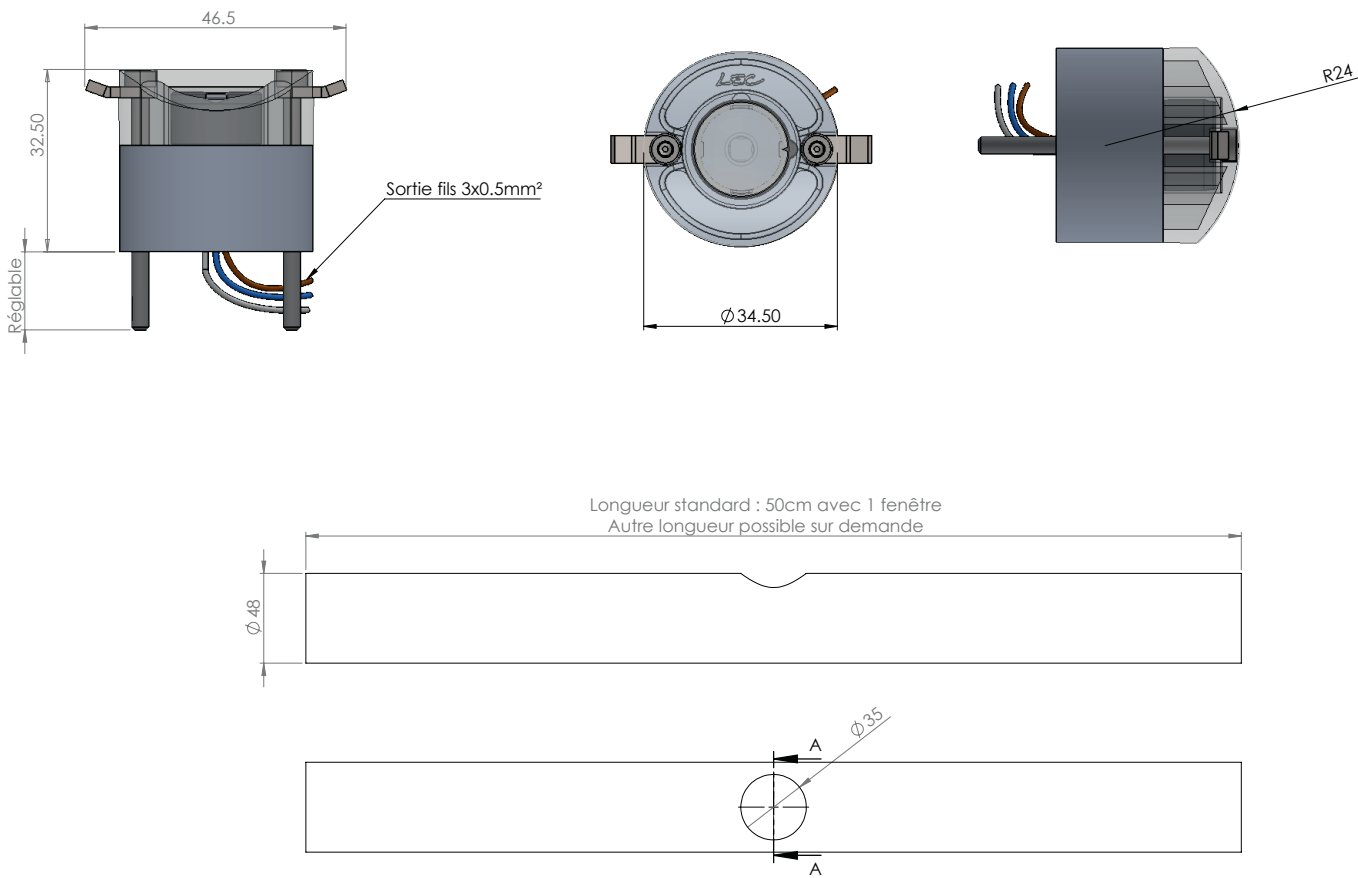


OPTICAL UNIT

| | |
|--------------------------|--|
| Color temperature | 2 200 K (A), 2 700 K (F), 3 000 K (E), 4 000 K (N), 6 000 K (W), Red (R), Amber (O), Green (V), Blue (L), Royal Blue (K) |
| Type of LED | Power LED |
| Optics | 80 x 50° (MB2). See details in the "Photometric Specifications" document |
| Number of LED | 1 |
| Reference flux* | 209 lm |
| Product reference | 5643 |

**This value, obtained at the luminaire output, corresponds to the optimum number and type of LEDs for warm white light (3,000 K).*

DIMENSIONS



CONFIGURATION GUIDE

Configuration example: 5643B48-E-MB2
 (to be customized with the references below)

| 5643 | B48 | E | MB4 |
|-------------------------------|-----|-------|--------------|
| Reference | LED | Color | - |
| 5643 | B48 | E | MB2 80 x 50° |
| | | | MB4 77° |
| | | | LED color |
| BUTTON B For handrail Ø 48 mm | | | |