

POINTS LUCERNE

1830

Pavement sides & embedded studs without protrusion

Elegant and discreet, LUCERNE is a round, flush-mounted mid-size luminaire designed for light marking, enhancing, and securing both public and private spaces. Thanks to its sober design and controlled lighting, it blends perfectly into the urban landscape, whether floor-mounted or wall-mounted. Ideal for visually structuring a pathway, highlighting a cycle track or staircase, or complementing the architecture of a site, LUCERNE offers a soft, functional, and aesthetic

lighting solution. Designed to meet a wide range of needs, it is available in three-color versions for light marking and four-color versions for lighting, for customized lighting atmospheres, and can also be customized to incorporate specific signage: motifs, pictograms, lettering, or dedicated luminous markings. This flexibility makes LUCERNE an ideal ally for combining safety signage, space animation, and signage in a single product.

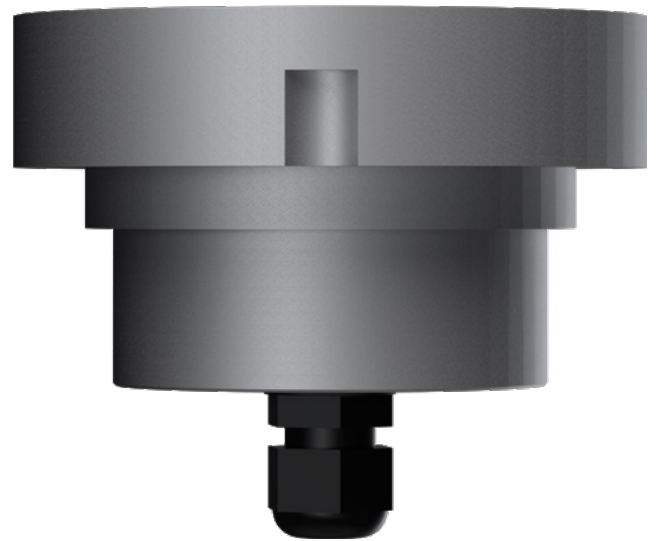


Credits from left to right:
 1/4. © Leigh Simpson - Dorchester, England
 2. © Jacques Basile - Le Havre, France
 3. © LEC - Carqueiranne, France
 5. © Marianne Grimont - Soignies, Belgium

FEATURES

LUMINAIRE'S BODY

Materials	Clear anodized machined aluminium
IP rating	IP68
IK rating	IK10 60 J
Weight	0.415 kg
Cable length	100 cm
Features	Transparent flat window 1-axis adjustable
Integrated power supply	24 V dc + PWM (class III)
Remote power supply via cable	230 V ac - non dimmable (class II)
Remote power supply in distant box	230 V ac -> 24 V dc + PWM Control possible via: 0-10 V, DMX, DALI, potentiometers



OPTICAL UNIT

Color temperature	2 200 K (A), 2 700 K (F), 3 000 K (E), 4 000 K (N), 6 000 K (W), Red (R), Amber (O), Green (V), Blue (L), Royal Blue (K), Four-color (TW in RGBW)
Type of LED	Power LED / Light marking LED
Optics	10°, 20°, 36°, 52°, 77°, 120°, 130 x 25° (L1), 116 x 44° (L2), 40 x 10° (L4), 130 x 25° D50° (L5), 116 x 44° D36° (L6), 100 x 20° (L7). See details in the "Photometric Specifications" document
Number of LED	4 / 36
Reference flux*	836 lm
Product reference	1830

*This value, obtained at the luminaire output, corresponds to the optimum number and type of LEDs for warm white light (3,000 K).

[illegible]

1830	T	K	DH	Y	S	L	L4E	D20E
Reference	Power supply	Protrusion	Flat window	Connector	LED	Color	Optics	Beam
								D20 Beam tilt (20°)
								E Beam orientation (E, S, W, N)
							L4 Optics	
							E Ellipse orientation (E, S, W, N)	
						L LED color		
						TW Four-color		
					Ø 4 Power LED			
					S 36 SMD LED			
					AT 12 trichromatic SMD LED			
					H 16 5mm LED (with option M: central mirror)			
				Ø Cable outlet				
				Y Cable connector				
			Ø Transparent flat window					
			D Sanded canopy et uniform					
			H Uniform					
			M Infinite mirror					
		Ø Integrated frame without protrusion						
		K Stainless steel frame Ø120mm, thickness: 3mm with spacer						
	Ø 24 V controllable via PWM							
	T 230 V							
1830	LUCERNE							