



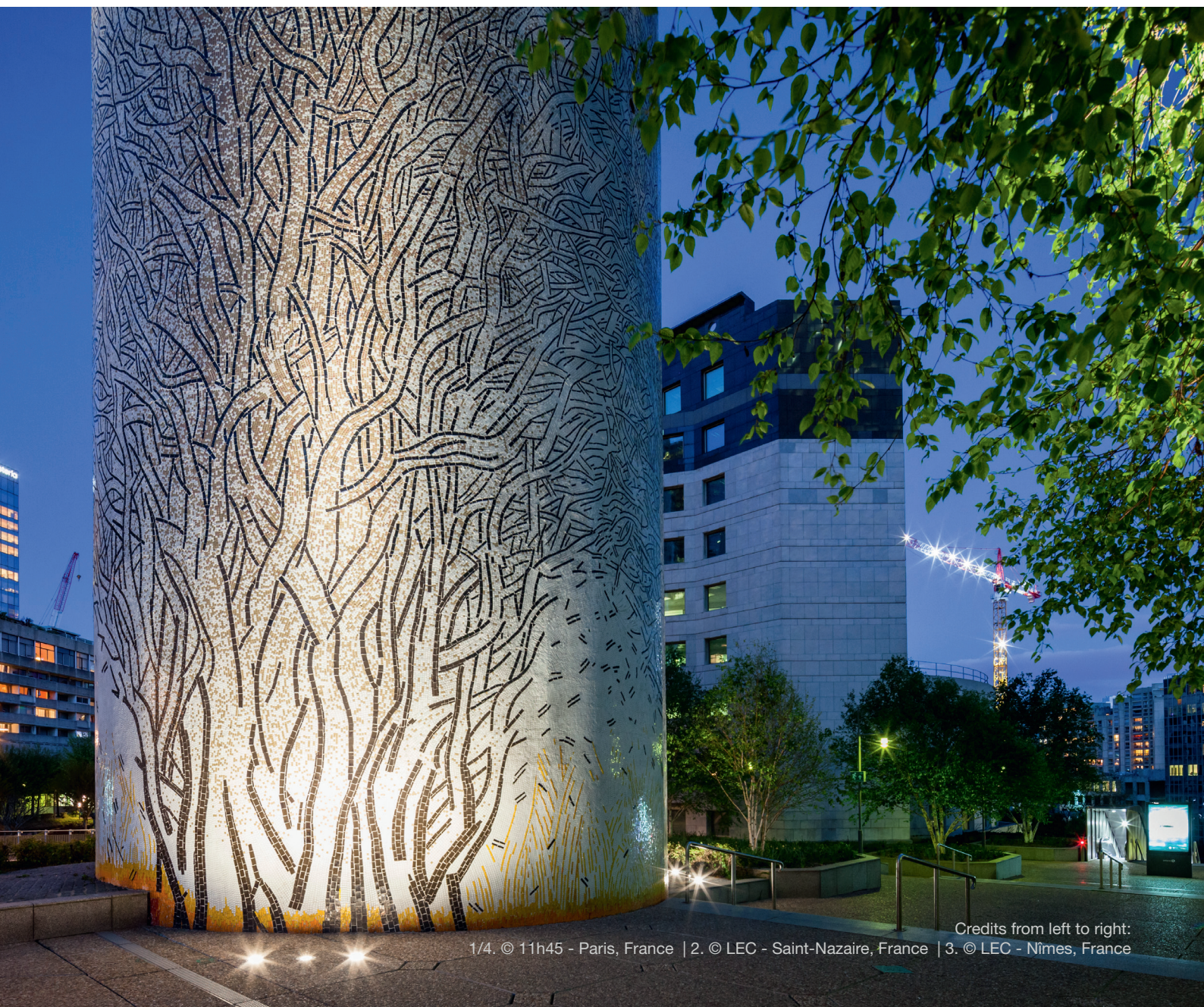
POINTS METEOR

2855

Embedded studs without protrusion

METEOR is the “maxi” version of the round flush-mounted range, offering a versatile and aesthetic lighting and signage solution. This luminaire is designed to highlight architectural details, street furniture and outdoor spaces. METEOR is particularly well-suited to safety or decorative signage, with regular placement to delineate pathways, cycle paths or

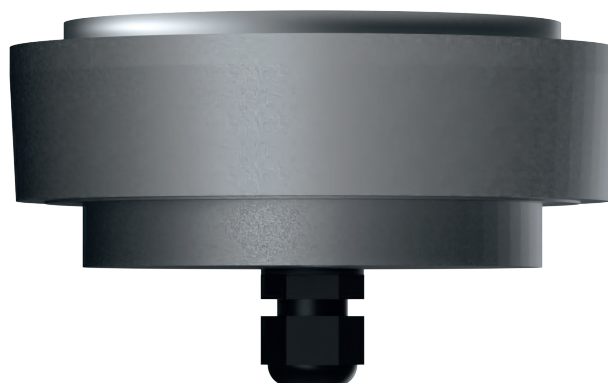
stairways. It can also liven up public spaces with a warm, dynamic light. The three-color option lets you customize the play of light to suit each project. The visual aspect of this luminaire is totally customizable, offering the possibility of creating unique visual effects, such as an infinite mirror effect light marker.



FEATURES

LUMINAIRE'S BODY

| | |
|---|--|
| Materials | Clear anodized machined aluminium |
| IP rating | IP68 |
| IK rating | IK10 60 J |
| Weight | 0.86 kg |
| Cable length | 100 cm |
| Features | Transparent flat window 1-axis adjustable |
| Integrated power supply | 24 V dc + PWM (class III) |
| Remote power supply via cable | 230 V ac - non dimmable, 230 V ac + 0–10 V, 230 V ac + DALI (class II) |
| Remote power supply in distant box | 230 V ac -> 24 V dc + PWM Control possible via: 0–10 V, DMX, DALI, potentiometers |

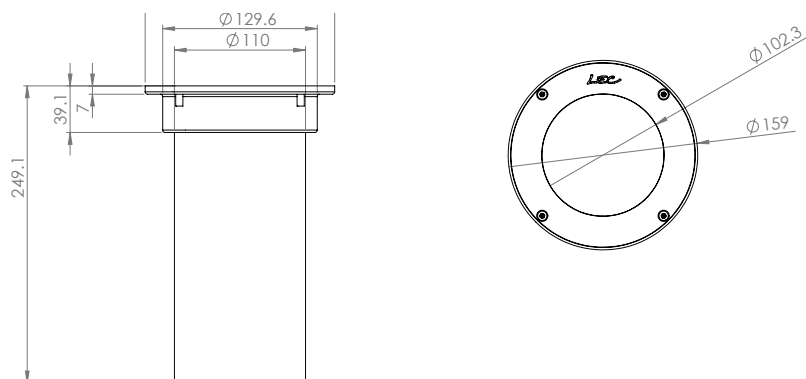


OPTICAL UNIT

| | |
|--------------------------|--|
| Color temperature | 2 200 K (A), 2 700 K (F), 3 000 K (E), 4 000 K (N), 6 000 K (W), Red (R), Amber (O), Green (V), Blue (L), Royal Blue (K) |
| Type of LED | Power LED / Light marking LED |
| Optics | 10°, 20°, 36°, 52°, 77°, 120°, 130 x 25° (L1), 116 x 44° (L2), 40 x 10° (L4), 130 x 25° D50° (L5), 116 x 44° D36° (L6), 100 x 20° (L7). See details in the "Photometric Specifications" document |
| Number of LED | 12 / 45 |
| Reference flux* | 2 508 lm |
| Product reference | 2855 |

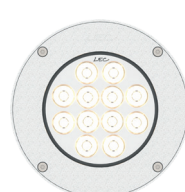
*This value, obtained at the luminaire output, corresponds to the optimum number and type of LEDs for warm white light (3,000 K).

DIMENSIONS



OPTIONS

Customizable visual (bike lane, PRM, other)
Infinite mirror effect
Trichromy (marker lighting)
20° deflected beam
Mixed optics possible
Honeycomb louvre
Uniform flat window



ACCESSORIES

Choice of recessed mountings for installation:

- With extension
- Compact



Infinite mirror

CONFIGURATION GUIDE

Configuration example: 2855TY-E-L4E
(to be customized with the references below)

| 2855 | T | H | Y | H | L | L4E |
|-----------|--------------|---------------------------|---|---------------------------------------|-------------|-----------|
| Reference | Power supply | Flat window | Connector | LED | Color | Optics |
| 2855 | METEOR | Ø 24 V T 230 V | | | | L4 Optics |
| | | | | | L LED color | |
| | | | | Ø 12 Power LED | | |
| | | | | S 45 SMD LED / 42 SMD LED (M version) | | |
| | | | AT 48 trichromatic SMD LED (not available in M version) | | | |
| | | | Ø AD8 cable + cable gland | | | |
| | | | Y Embase connector | | | |
| | | Ø Transparent flat window | | | | |
| | | H Uniform | | | | |
| | | M Infinite mirror | | | | |