



EXTRAS PALAIS ROYAL

1843

Pavement sides & embedded studs

PALAIS ROYAL is a compact LED spotlight, designed to be surface-mounted on the floor and provide extensive, low-angled illumination. Its unobtrusive, effective light helps to structure space while guaranteeing optimum visibility for pedestrian and cyclist paths and traffic areas. Thanks to its single or dual beam direction, it is perfectly suited to the configuration of public spaces, footbridges, pontoons, or

to highlighting low-height facades. Easy to install, it can be embedded directly on the ground (except 230V) or on a flush-mounting plate, depending on project requirements. Versatile, reliable, and unobtrusive, PALAIS ROYAL blends harmoniously into the space while delivering optimum lighting performance.

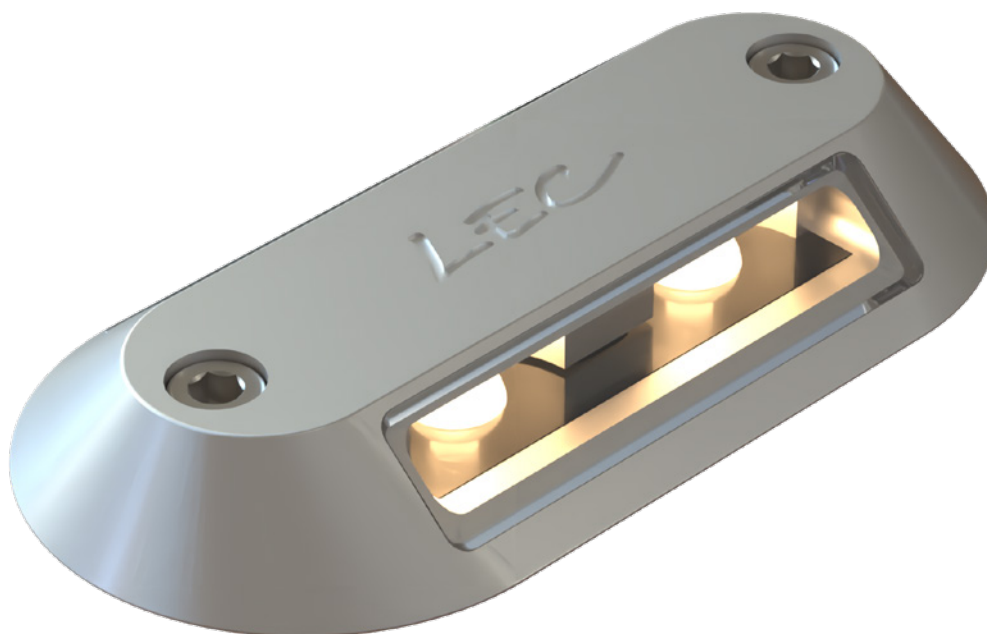


Credits from left to right:
 1. © CD92/WILLY LABRE - Boulogne, France
 2. © LEC - Sanary, France
 3. © LEC - Calvi, Corsica
 4/5. © LEC - Marseille, France

FEATURES

LUMINAIRE'S BODY

Materials	Clear anodized machined aluminium	
IP rating	IP68	
IK rating	IK10 60 J	IK10 40 J
Weight	0.61 kg	0.715 kg
Cable length	100 cm	100 cm
Features	Two light emission directions Parallel beams Transparent flat window	One light emission directions Transparent flat window
Integrated power supply	24 V dc + PWM (class III) 230 V ac - non-dimmable (class II)	
Remote power supply in distant box	230 V ac -> 24 V dc + PWM Control possible via: 0-10 V, DMX, DALI, potentiometers	

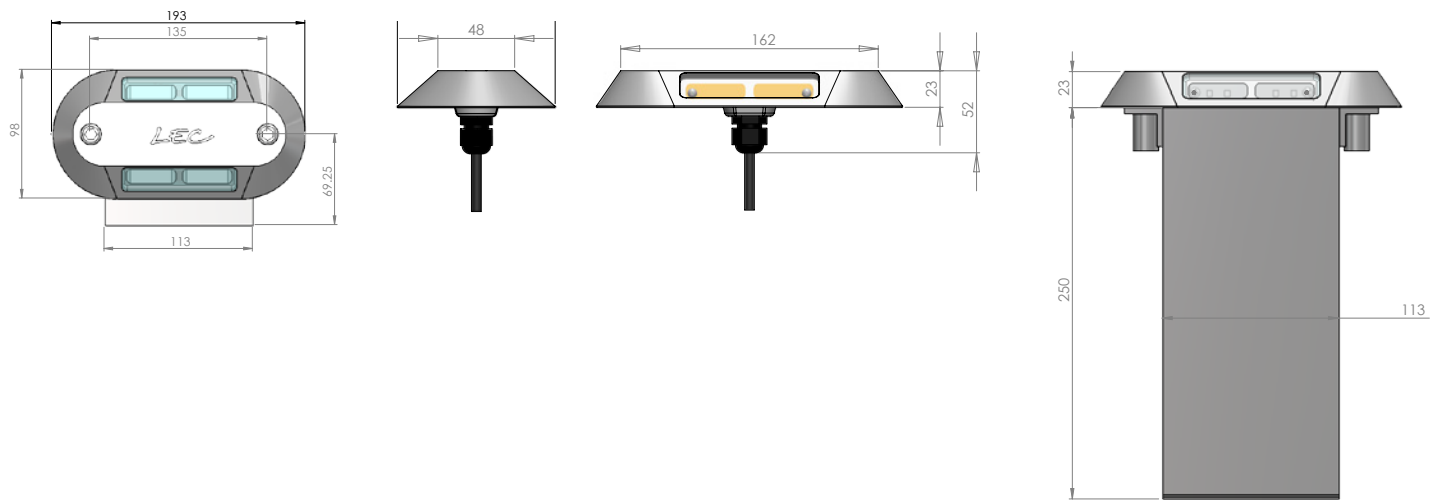


BLOC OPTICS

Color temperature	2 200 K (A), 2 700 K (F), 3 000 K (E), 4 000 K (N), 6 000 K (W), Red (R), Amber (O), Green (V), Blue (L), Royal Blue (K)	
Type of LED	Power LED	
Optics	Narrow beam (C2)	
Number of LED	4	2
Reference flux*	419 lm	210 lm
Product reference	1843	1843 SF

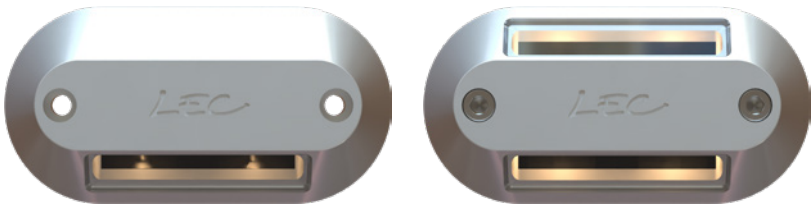
*This value, obtained at the luminaire output, corresponds to the optimum number and type of LEDs for warm white light (3,000 K).

DIMENSIONS



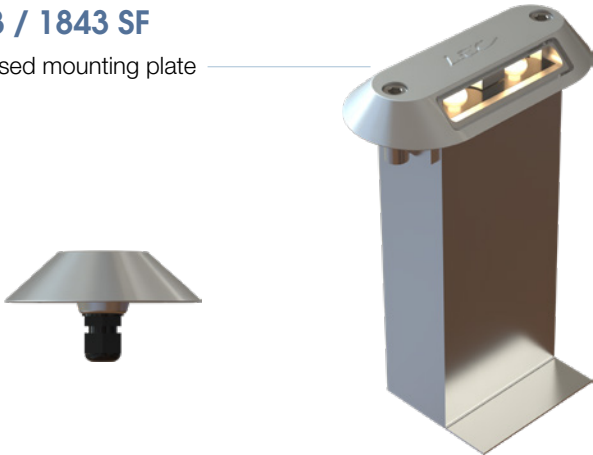
OPTIONS

1843
Different LED color on each side



ACCESSORIES

1843 / 1843 SF
Recessed mounting plate



CONFIGURATION GUIDE

Configuration example: **1843SFYPS-R-C2**
(to be customized with the references below)

1843	SF	Y	PS	R	C2
Reference	Glass window	Cable	Painting	Color	Optics
1843 PALAIS ROYAL					C2 Optics
				R LED color	
			Ø Without paint		
			PS Special paint		
			Ø Cable Output		
		Y Connector base			
	Ø 2 glass windows				
	SF 1 glass window				