

5781-5782

Embedded studs

With its discreet profile in anodized aluminum, the PASSY line is designed to enhance outdoor spaces while guaranteeing precise, even lighting. Available in a range of lengths and configurations, this linear luminaire offers a solution perfectly suited to demanding projects, whether revealing the beauty of a monument or structuring an urban landscape. Thanks to its advanced optics, it ensures optimum light distribution, perfectly sized according to requirements. Totally robust, its IP68 waterproof optical compartment and IK10 shock

resistance make it a reliable and durable choice, even in the most exposed environments. In addition, the LED plate can be easily oriented without having to open the product, guaranteeing optimized, stress-free installation. PASSY features an intelligent flush-mounting system and ergonomic wiring options, facilitating fast, efficient installation. Elegant and high-performance, it's an ideal solution for projects where aesthetics, efficiency and durability are essential.



Credits from left to right:

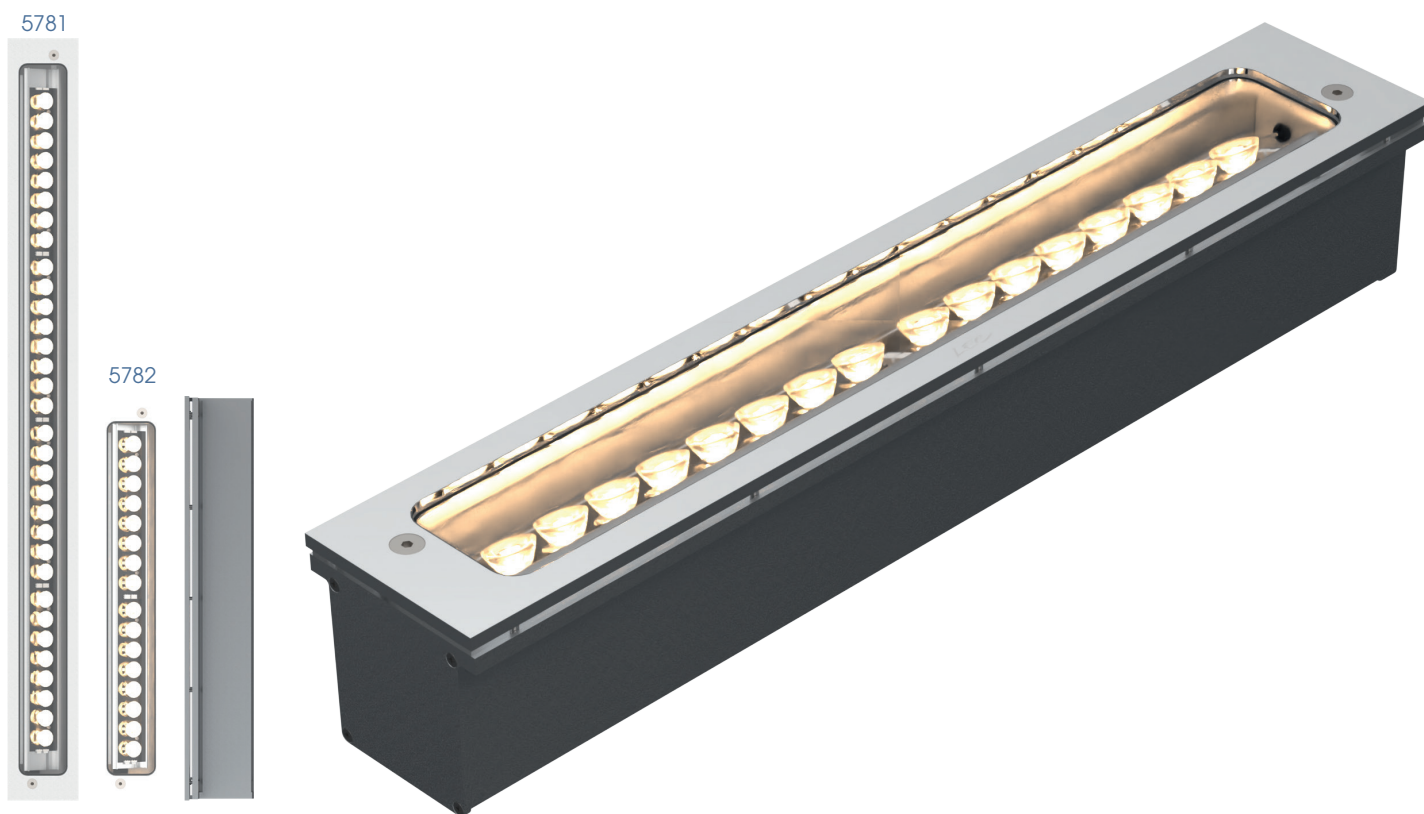
1. © LEC - Vendôme, France | 2. © Camille Lafon - Nîmes, France
3. © LEC - Mons, Belgium | 4. © LEC - Istres, France



FEATURES

LUMINAIRE'S BODY

Materials	Clear anodized machined aluminium	
IP rating	IP68	
IK rating	IK10 60 J	
Weight	6 kg	3.3 kg
Cable length	100 cm	53 cm
Features	Adjustable orientation without disassembly Transparent flat window	-
Length	100 cm	53 cm
Integrated power supply	230 V ac - non dimmable, 230 V ac - 0/10 V, 230 V ac + DALI, 230 V + DMX (class II)	

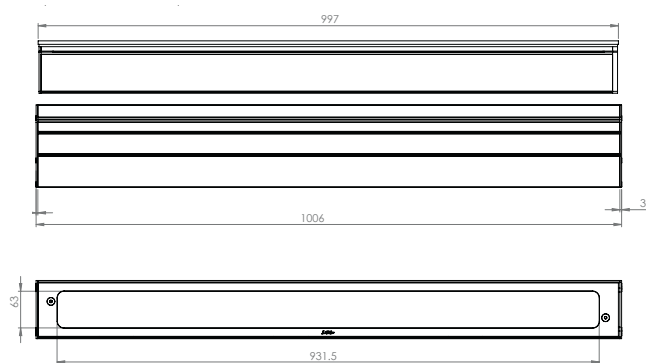


OPTICAL UNIT

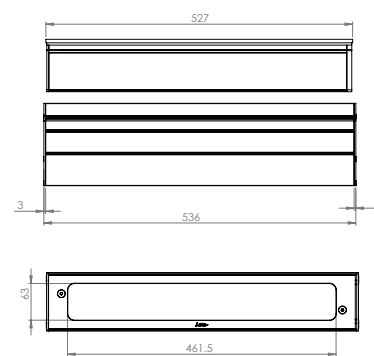
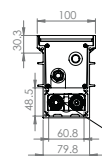
Color temperature	2 200 K (A), 2 700 K (F), 3 000 K (E), 4 000 K (N), 6 000 K (W), Red (R), Amber (O), Green (V), Blue (L), Royal Blue (K), Four-color (TW in RGBW)	
Type of LED	Power LED	
Optics	10°, 20°, 36°, 52°, 77°, 120°, 130 x 25° (L1), 116 x 44° (L2), 100 x 12° (L3), 40 x 10° (L4), 130 x 25° D50° (L5), 116 x 44° D36° (L6), 100 x 20° (L7). See details in the "Photometric Specifications" document	
Number of LED	32	16
Reference flux*	6 688 lm	3 344 lm
Product reference	5781	5782

*This value, obtained at the luminaire output, corresponds to the optimum number and type of LEDs for warm white light (3,000 K).

DIMENSIONS



5781



5782

OPTIONS

5781

Four-colour
Mixed optics possible
Screen-printed light control
Honeycomb louvre
War memorial version (the color of your flag)

5782

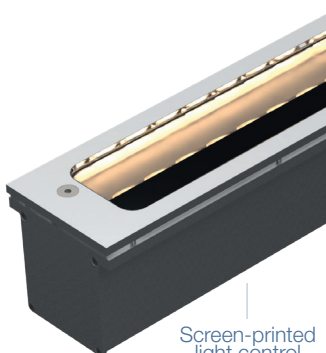
Four-colour
Mixed optics possible
Screen-printed light control
Honeycomb louvre



Honeycomb louvre

5781 / 5782

Recessed mounting profile for cable routing – single or continuous installation



Screen-printed light control



CONFIGURATION GUIDE

Configuration example: **5781TDYCF-W-L4W**
(to be customized with the references below)

5781	TD	Y	CF	W	L4W
Reference	Power supply	Connector	Painting	Color	Optics
					F3 Optics mix for facade lighting L4 Optics W Ellipse orientation (E, S, W, N)
				W LED color TW Four-color MAM The color of your flag	
			Ø Without screen printing light control CF With screen printing light control		
		Ø Cable outlet Y Cable connector			
	T 230 V non dimmable TD 230 V controllable via DALI TV 230 V controllable via 0/10 V TX 230 V controllable via DMX				
5781	PASSY				
5782	PASSY				