

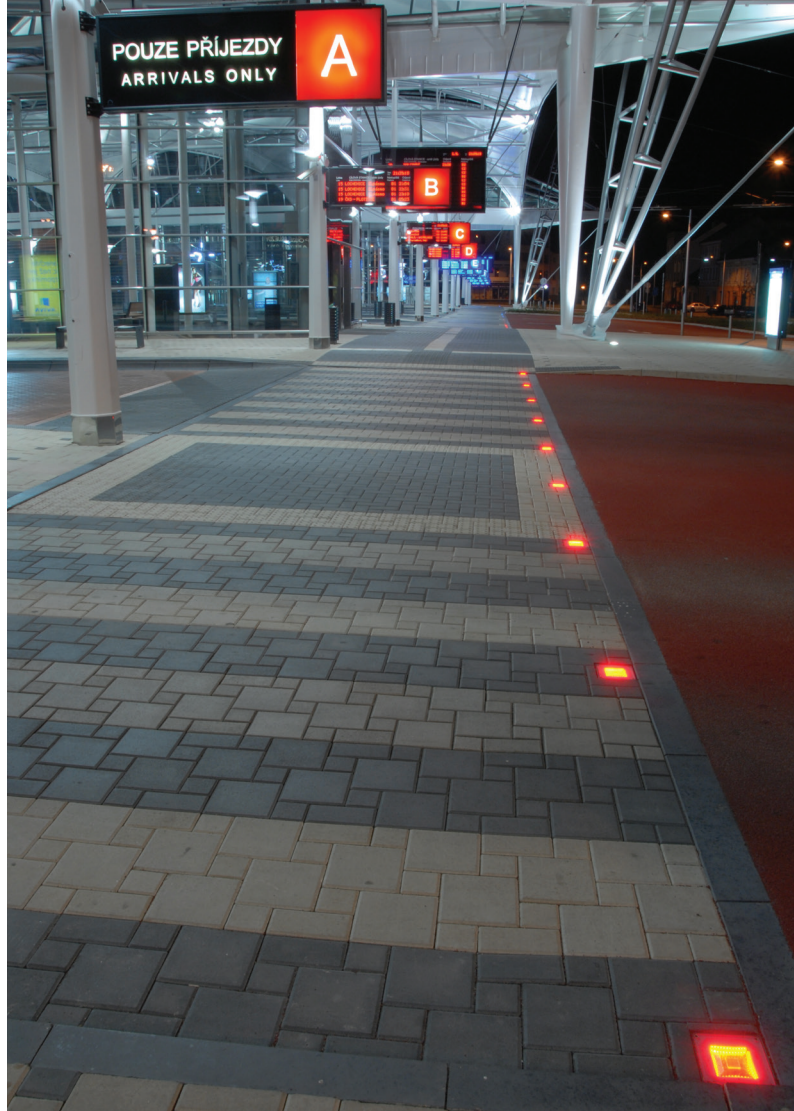


2852

Embedded studs

The square-shaped PYRAMIDE is a versatile light marker offering a wide range of applications. Ideal for pedestrian and cyclist paths, it can also be used for decorative or safety purposes, particularly in public spaces. Its protrusion-free design allows it to blend discreetly into the environment,

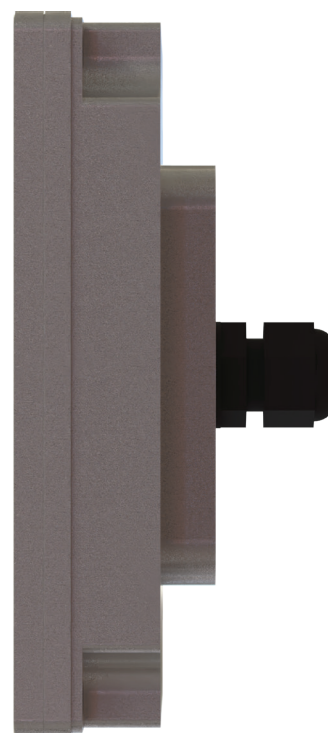
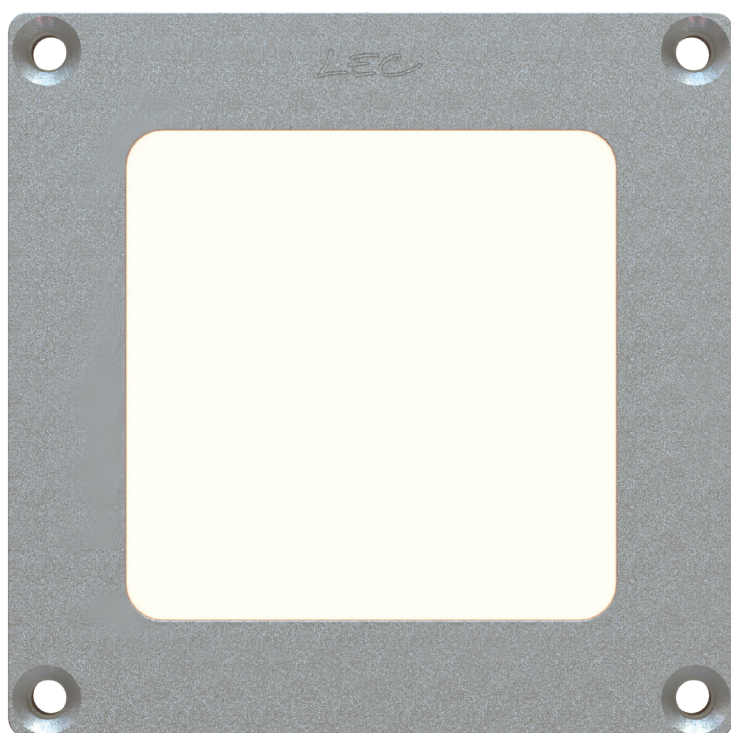
and the two sizes of flush-mount pots offer great installation flexibility. Non-directional, it can also be offered in a bottomless version, creating a specific lighting effect and an original touch.



FEATURES

LUMINAIRE'S BODY

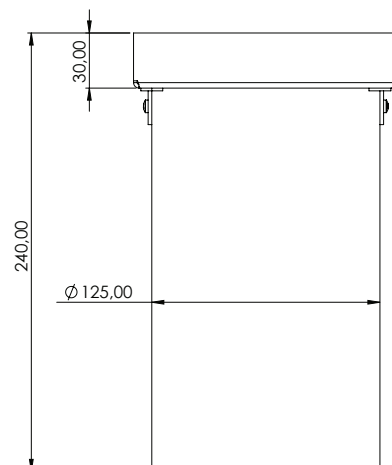
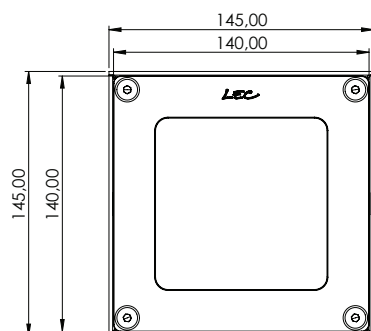
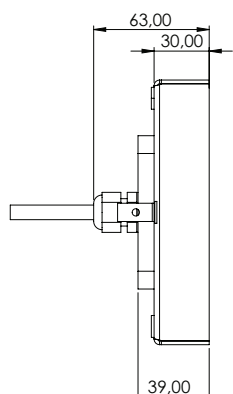
Materials	Clear anodized machined aluminium
IP rating	IP68
IK rating	IK10 20 J
Weight	1 kg
Cable length	100 cm
Features	Transparent flat window
Integrated power supply	24 V dc + PWM (class III)
Remote power supply in distant box	230 V ac -> 24 V dc + PWM Control possible via: 0-10 V, DMX, DALI, potentiometers



OPTICAL UNIT

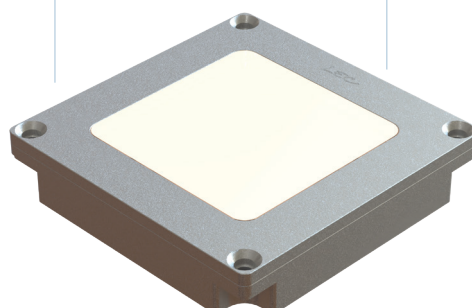
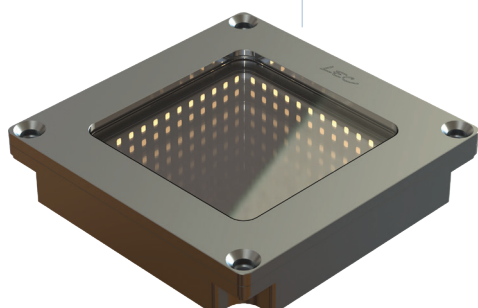
Color temperature	2 200 K (A), 2 700 K (F), 3 000 K (E), 4 000 K (N), 6 000 K (W), Red (R), Amber (O), Green (V), Blue (L), Royal Blue (K), RGB (AT)
Type of LED	Light marking LED
Optics	Uniform. See details in the "Photometric Specifications" document
Number of LED	48 / 64
Product reference	2852

DIMENSIONS



OPTIONS

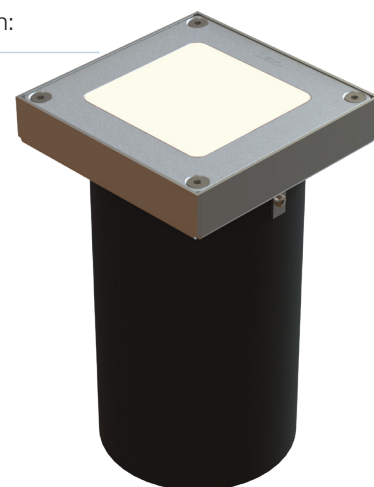
Uniform window
Infinite mirror effect
Color animation



Choice of recesses for installation:

- With extension
- Compact

ACCESSORIES



CONFIGURATION GUIDE

Configuration example: [2852MHY-SL](#)
(to be customized with the references below)

2852	M	H	Y	S	L
Reference	Version	Flat window	Cable	LED	Color
2852 PYRAMIDE		Ø LEDs placed at the bottom	Ø Cable Output	S	L LED color
		M Infinite mirror	Y Cable Connector		
		Ø Transparent flat window			
		H Uniform			

64 SMD LEDs in uniform version or 4x12 LEDs in infinite mirror version