



# EXTRAS SAINT-JEAN

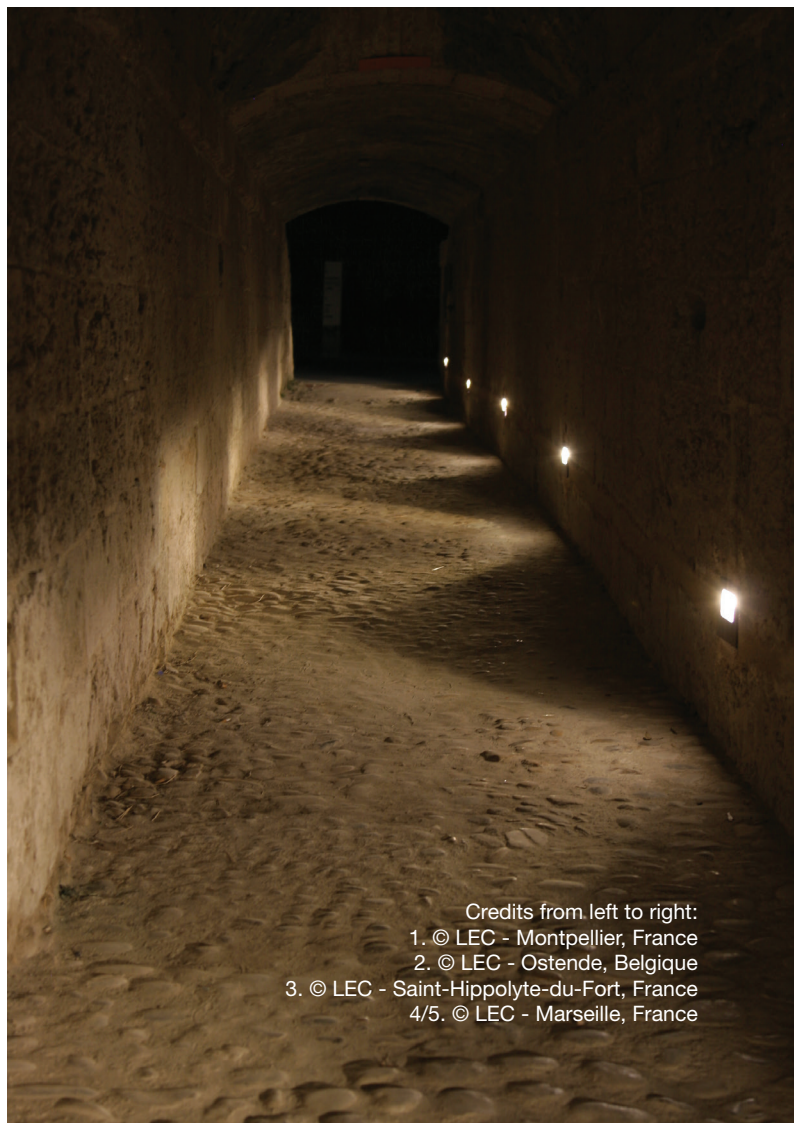
## 4330

Wall-recessed & mast

SAINT-JEAN is a recessed spotlight with a slight 3 mm projection, or with no projection in the bollard version, specially designed for lighting pedestrian and cycle paths. Installed less than a meter from the ground, it offers a discreet and effective solution for illuminating large areas with long spacing, up to 6 meters. Thanks to its specific H30 and H60 optics, it provides even, appropriate lighting, ideal for public spaces. The beam can be tilted from 0 to 30°

without having to open the fixture, guaranteeing a perfect seal. Available with two different flush-mount pot sizes, SAINT-JEAN can also be customized with a powder-coated finish: only the flange or bollard (depending on the option chosen) can be painted for optimum aesthetic integration. Versatile and elegant, it blends harmoniously into different urban environments. A bollard version is also available, offering greater flexibility for pathway lighting.





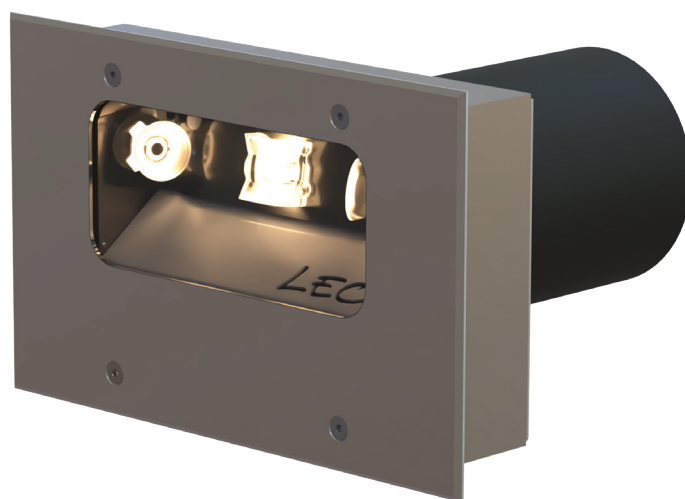
Credits from left to right:  
1. © LEC - Montpellier, France  
2. © LEC - Ostende, Belgique  
3. © LEC - Saint-Hippolyte-du-Fort, France  
4/5. © LEC - Marseille, France



## FEATURES

### LUMINAIRE'S BODY

|   |  |
|---|--|
| <b>Materials</b>                          | Anodized aluminium   |
| <b>IP rating</b>                          | IP67   |
| <b>IK rating</b>                          | IK10 20 J  |
| <b>Weight</b>                             | 2.08 kg  |
| <b>Cable length</b>                       | 100 cm   |
| <b>Features</b>                           | 1-axis adjustable<br>Adjustable orientation without disassembly<br>Adjustable tray: 0 to 30° |
| <b>Integrated power supply</b>            | 24 V dc + PWM (class III)<br>230 V ac - non-dimmable (class II)                              |
| <b>Remote power supply in distant box</b> | 230 V ac -> 24 V dc + PWM<br>Control possible via: 0-10 V, DMX, DALI, potentiometers         |

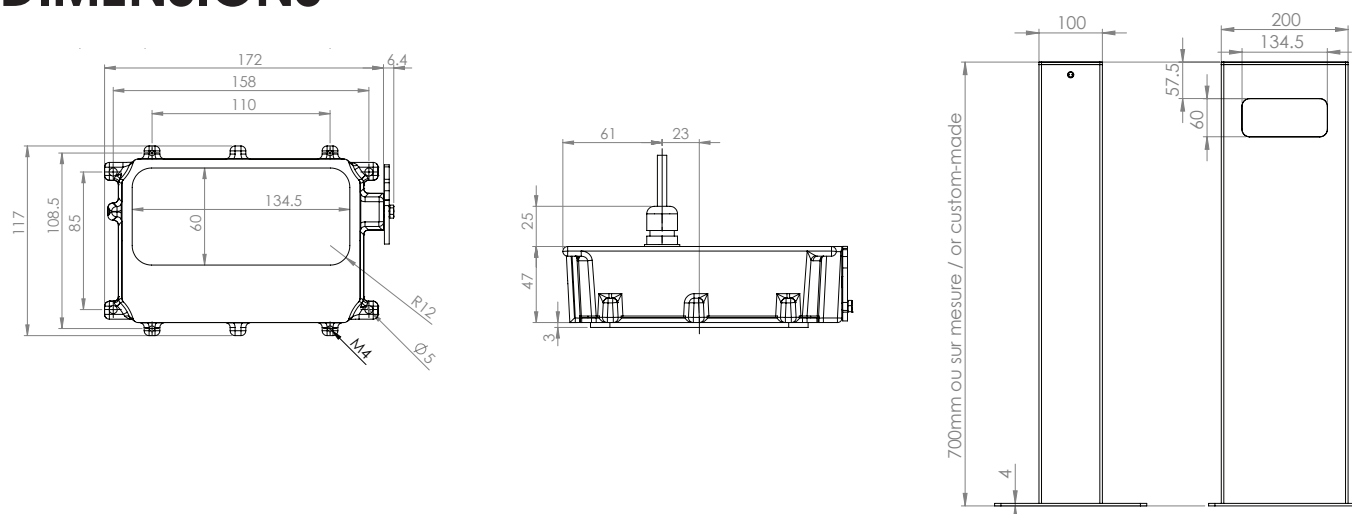


### OPTICAL UNIT

|                          |  |
|--------------------------|--|
| <b>Color temperature</b> | 2 200 K (A), 2 700 K (F), 3 000 K (E), 4 000 K (N), 6 000 K (W), Red (R), Amber (O), Green (V), Blue (L), Royal Blue (K)                               |
| <b>Type of LED</b>       | Power LED  |
| <b>Optics</b>            | 10°, 20°, 36°, 52°, 77°, 120°, 130 x 25° (L1), 116 x 44° (L2), 40 x 10° (L4), 100 x 20° (L7). See details in the "Photometric Specifications" document |
| <b>Number of LED</b>     | 3 / 4  |
| <b>Reference flux*</b>   | 892 lm   |
| <b>Product reference</b> | <b>4330</b>  |

\*This value, obtained at the luminaire output, corresponds to the optimum number and type of LEDs for warm white light (3,000 K).

## DIMENSIONS



## OPTIONS

RAL powder coating paint of your choice  
Various angles of light beam opening



## ACCESSORIES

Choice of recessed mountings for installation:  
- with extension  
- compact

Option Stainless steel bollard, height between 40 cm or 70 cm. Base plate for installation on prefabricated concrete block with center-to-center spacing of 20 x 20 cm.



## CONFIGURATION GUIDE

Configuration example: **4330TY-W-H60**  
(to be customized with the references below)

| 4330<br>Reference | T<br>Pilote             | Y<br>Cable       | W<br>Color     | H60<br>Color   |
|-------------------|-------------------------|------------------|----------------|--|
|                   |                         |                  |                | <b>H30</b> 3 LEDs with mixed optics<br><b>H60</b> 4 LEDs with mixed optics<br><b>L3</b> 3 LED with optics 100 x 12°<br><b>Other Optics</b> 4 LED |
|                   |                         |                  |                | <b>W</b> LED color   |
|                   |                         |                  | Ø Cable Output |  |
|                   |                         | Y Connector base |                |  |
|                   | Ø 24 V PWM controllable |                  |                |  |
|                   | T 230 V non-dimmable    |                  |                |  |
| 4330              | SAINT-JEAN              |                  |                |  |