



EXTRAS SAINT-RAPHAEL

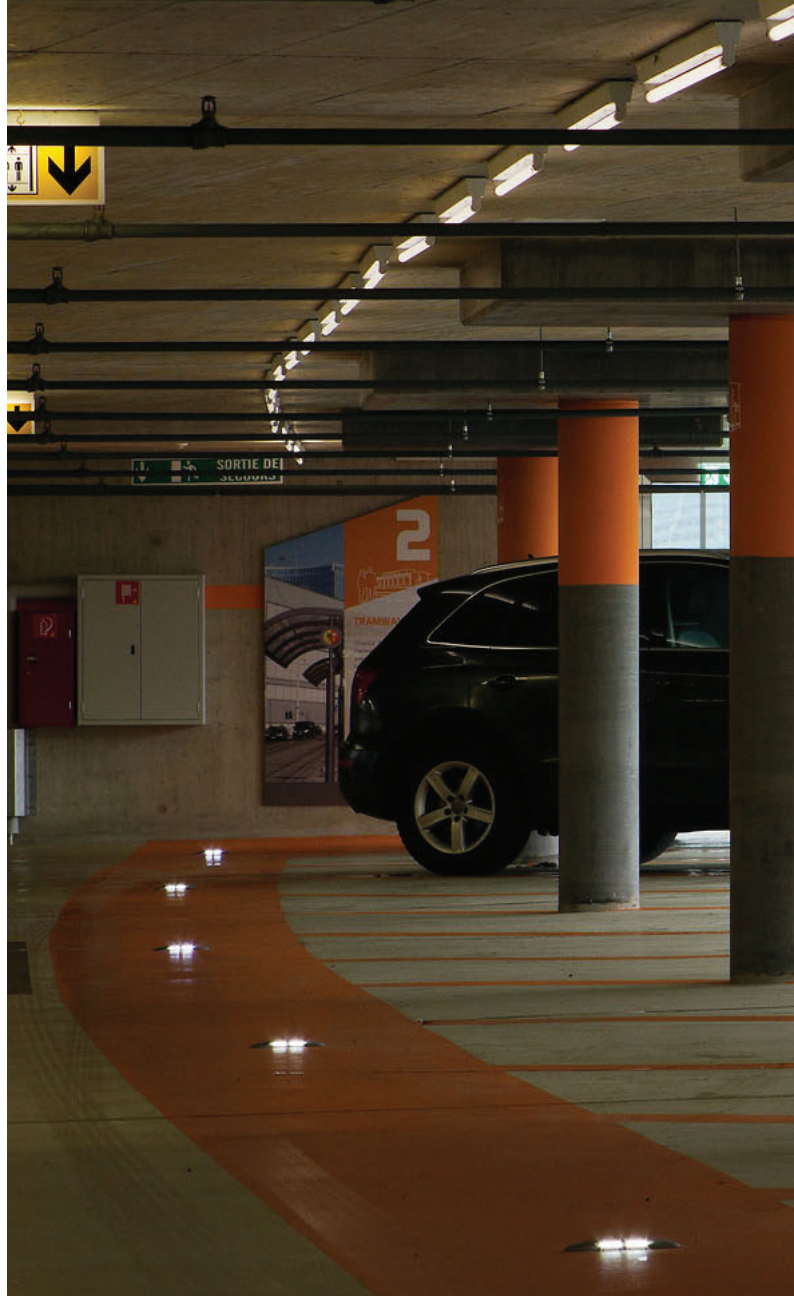
1844

Embedded studs

SAINT-RAPHAEL is a bi-directional light marker designed for emergency beaconing of pedestrian walkways, particularly in underground parking lots. Its innovative design allows cars to travel at slow speeds while reducing the obstacles for pedestrians, guaranteeing their safety while keeping traffic flowing smoothly. SAINT-RAPHAEL's versatility means

it can be used for decorative or safety applications in public spaces, in addition to its essential role as a marker in parking lots. Its robust, functional design makes it an ideal choice for high-traffic environments, while ensuring optimum visibility and minimal impact on the passage of users.

Certified in accordance with European standard 60598-2-22 on emergency lighting fixtures. Protrusion representing an obstacle to two-wheeled vehicles or pedestrians. We recommend keeping it lit at all times to signal the obstacle.



Credits from left to right:
1/2/3. © Jean-Philippe Humbert - Genève, Switzerland
4. © LEC - Aschaffenburg, Germany

FEATURES

LUMINAIRE'S BODY

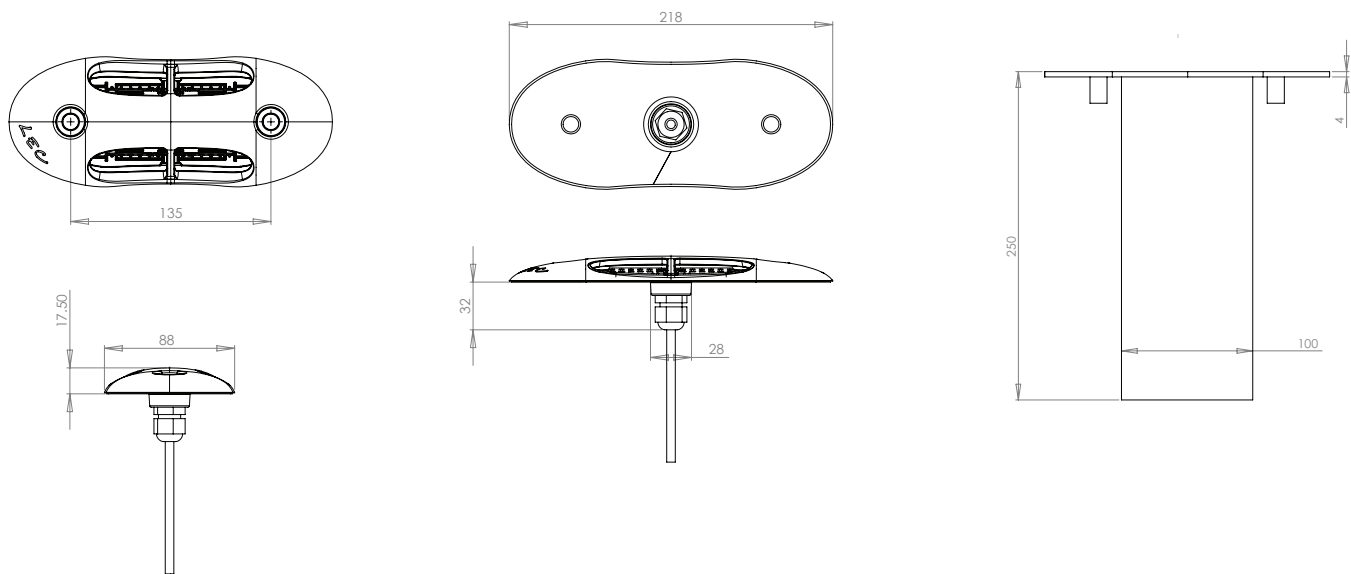
Materials	Black anodized aluminium
IP rating	IP68
IK rating	IK10 60 J
Weight	0.36 / 0.57 kg
Cable length	100 / 200 cm
Features	Parallel beams
Integrated power supply	24 V dc + PWM (class III)
Remote power supply in distant box	230 V ac -> 24 V dc + PWM Control possible via: 0-10 V, DMX, DALI, potentiometers



OPTICAL UNIT

Color temperature	2 200 K (A), 2 700 K (F), 3 000 K (E), 4 000 K (N), 6 000 K (W), Red (R), Amber (O), Green (V), Blue (L), Royal Blue (K)
Type of LED	Light marking LED
Optics	120°. See details in the "Photometric Specifications" document
Number of LED	24
Product reference	1844

DIMENSIONS



OPTIONS

With CR1 fire-resistant safety cable, Ø 9.2mm



ACCESSORIES

Recessed mounting plate



CONFIGURATION GUIDE

Configuration example: [1844YPS-HL](#)
(to be customized with the references below)

1844	Y	PS	H	L	
Reference	Cable	Painting	LED	Color	
1844 SAINT-RAPHAEL		Ø	Without paint		L LED color
		Y	Special paint	H	Lensed SMD LED
		CR1			